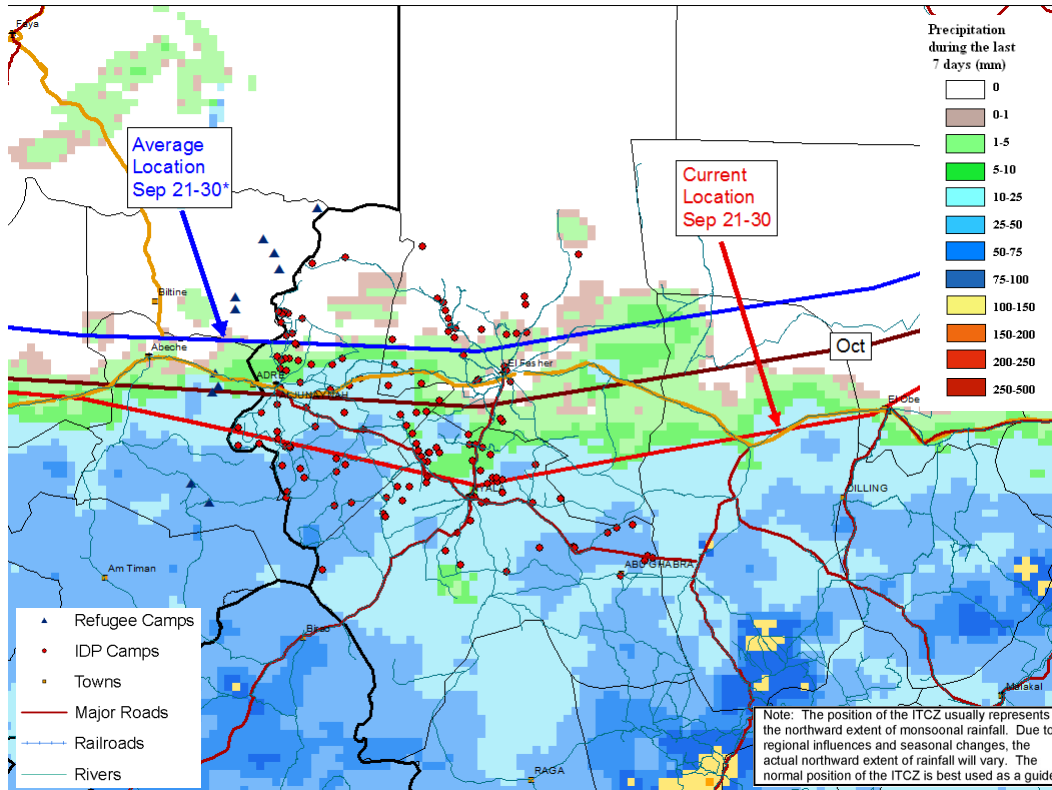


Darfur Crisis Rain Timeline

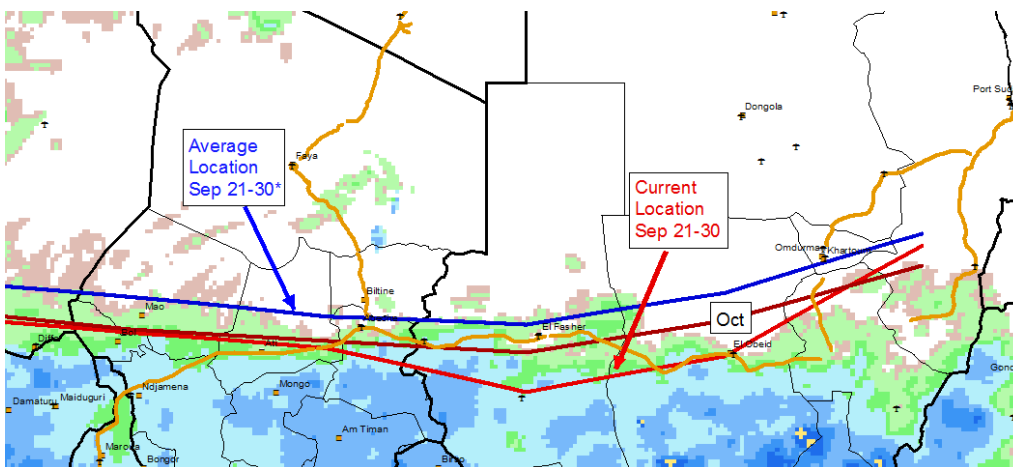
October 13, 2011

ITF moves anomalously south

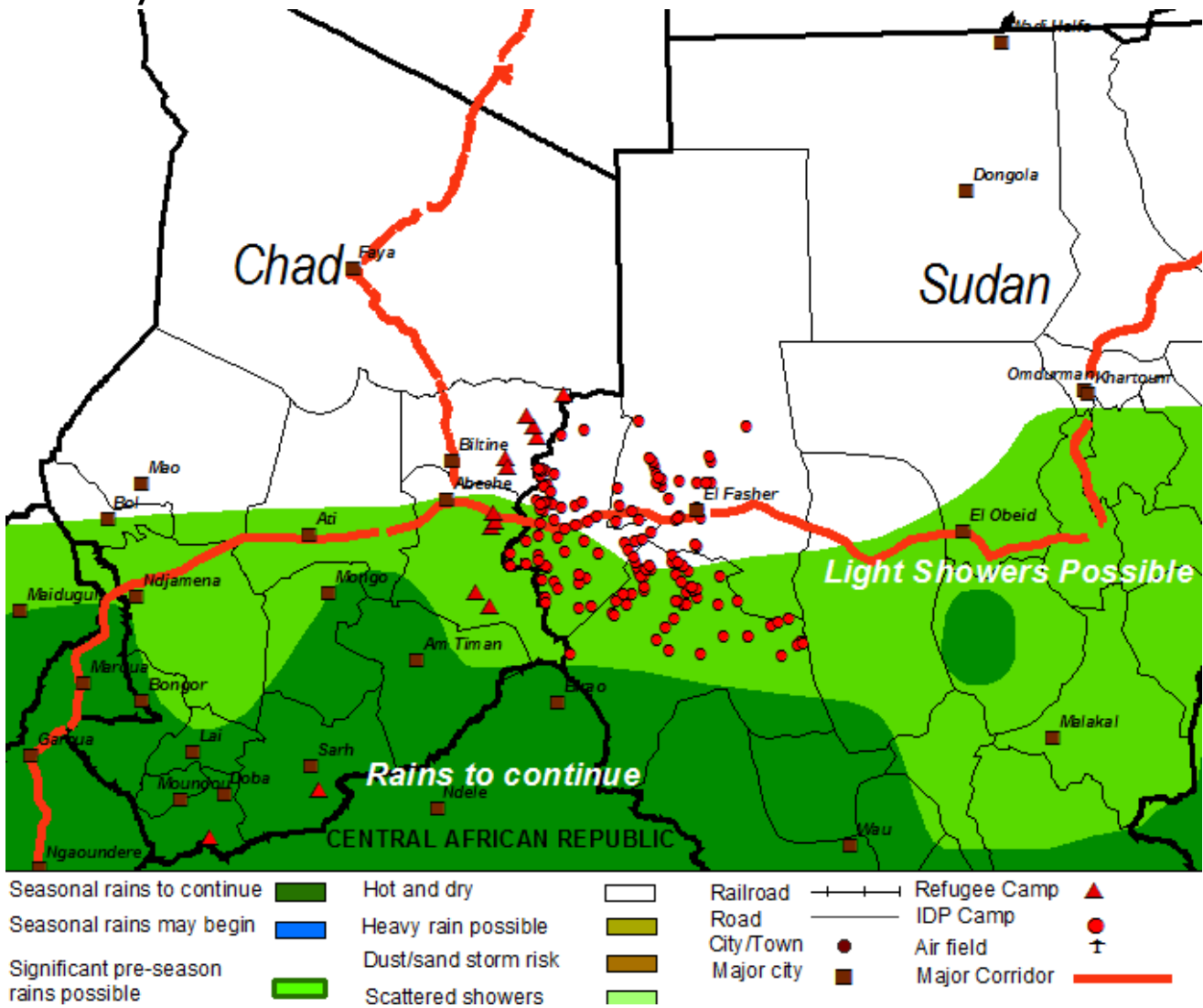


The anomalously southern position of the Intertropical Front (ITF) has resulted in light rainfall across central and northern portions of Darfur and neighboring Chad. IDP and refugee camps located in central and northern Darfur and neighboring Chad received little rainfall (< 10 mm) during the past week while camps located to the south observed moderate rainfall totals (10-50 mm).

Regional Overview: Transport Corridors



Seven-day rainfall forecast for Darfur



Typical Darfur road conditions during the rainy season

- As the ITF climatologically moves south, rainfall is forecast to continually get lighter across Darfur and neighboring regions in Chad.
- For the next week, IDP and refugee camps located in Southern Darfur and southern Chad are expected to receive moderate rains (10-40 mm) while camps located to the north are forecast to observe little rainfall (< 10 mm).

